

**Hanami is designed  
to facilitate the  
collaborative  
creation and  
management of  
knowledge graphs**

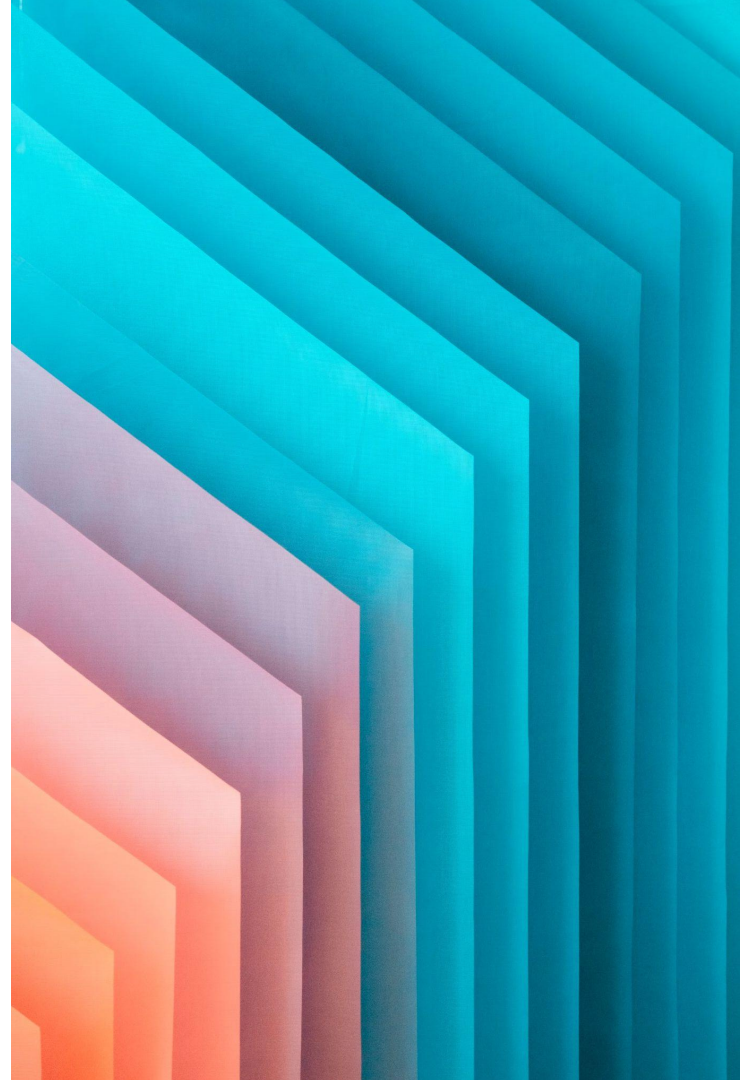


**Hanami**

by Cogni.zone

1/5

# Who are we?





⇒ **Team of 30+** Semantic Engineers, Semantic Consultants, Ontologists, Project Managers, ...

⇒ **Based in Brussels and Luxembourg** since 2015

⇒ **Main competences**

- ★ Semantic data management
- ★ Semantic data integration
- ★ Semantic data publishing

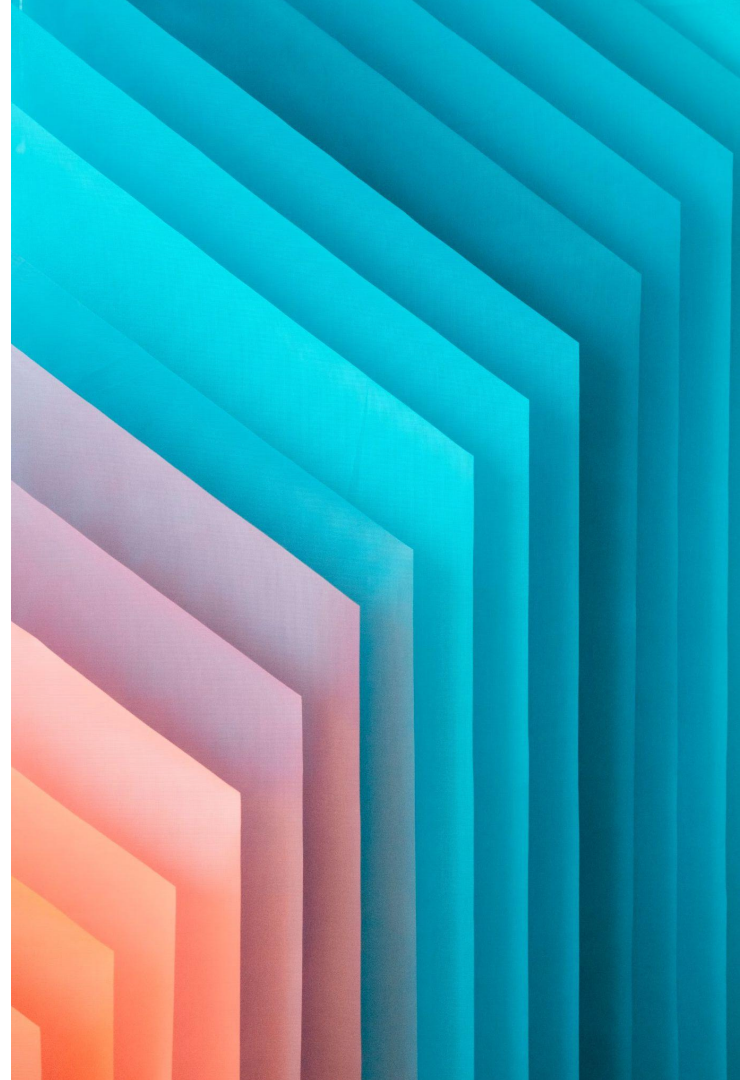
⇒ **Clients**

- SEMIC
- DG EMPL (European Commission)
- European Parliament



2/5

# Why Hanami?



# Issues are with data prior to system migration

Data curation via SPARQL queries

Data deletion via SPARQL queries

Add graphs and metadata via SPARQL queries



**Enormous time lost by our most senior semantic engineers**

# Legislative Knowledge graphs containing the Legislation of the countries

**Security concerns** → Defining and tracking who can access the graph

**Lacking in-house expertise** → Departments do not have the expertise to prepare and execute SPARQL queries



**Maintenance is complex and cost extensive**



# **Our customers are looking for tailored development close to their data management needs**

User-specific cases

Access to editing by non-specialists

Use of existing templates

**This is why we created**



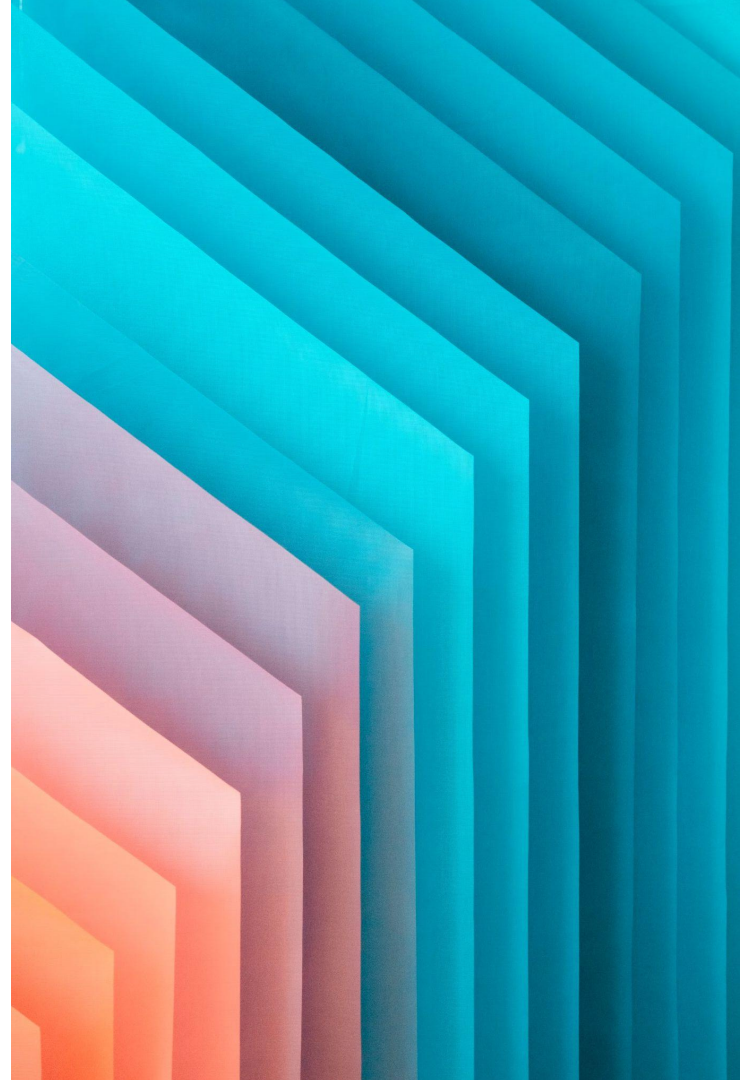
**Hanami**

**A lightweight  
framework and  
platform for editing  
and publishing  
knowledge graph  
RDF data**



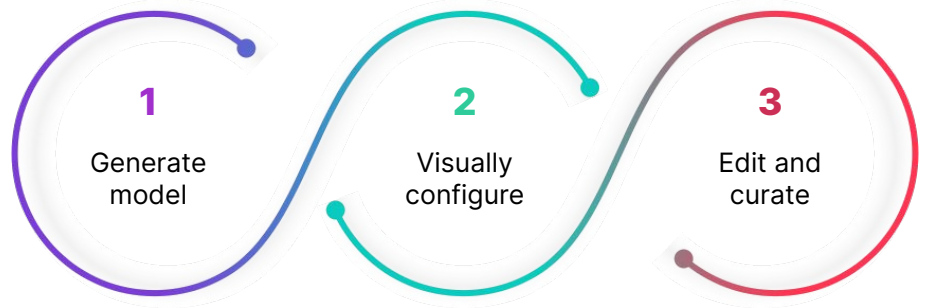
3/5

# What is Hanami?



# Hanami is an intuitive editing interface that overlays on existing or new knowledge graphs

In a dynamically model-driven editing environment, the model definition and the interface are synchronous.



## Navigation

▾ Acts

▾ Node Shapes

- > hanami:Collection
- > hanami:Elasticsearch
- > hanami:NodeEditor
- > hanami:RdfStore
- > hanami:TemplateViewer
- > hanami:Workspace

+ Ajouter Titre

### Node Shapes (33)

- hanami:Collection
  - hanami:Elasticsearch
  - hanami:NodeEditor
  - hanami:RdfStore
  - hanami:TemplateViewer
  - hanami:Workspace
  - jolux:Act
  - jolux:Citation
  - jolux:Consolidation
  - jolux:ConsolidationAbstract
  - jolux:Expression
  - jolux:InitialDraft
  - jolux:Language
  - jolux:LegalInstitution
  - jolux:LegalResourceGenre
  - jolux:LegalResourceSubdivision
  - jolux:LegalTaxonomy
  - jolux:Manifestation
  - jolux:Memorial
  - jolux:MemorialSerial
- Voir plus**

+ Ajouter Node Shapes

**Form configuration based to the users' needs**

## Navigation



Rechercher...



> 00.404 Initiative parlementaire. Loi fédérale

### Numéro de séquence dans l'année de publication

322

### Type de document

Rapport (ou avis) du Conseil fédéral

### Trouve sa réalisation dans (3)

DEU 00.404 Parlamentarische...

FRA 00.404 Initiative parlementaire...

ITA 00.404 Iniziativa parlamentare...

+ Ajouter Trouve sa réalisation dans

<http://data.legilux.public.lu/resource/ontology/jolux#legalResourceSubdivisionIsPartOf>

+ Ajouter

### Dates

#### Date du document

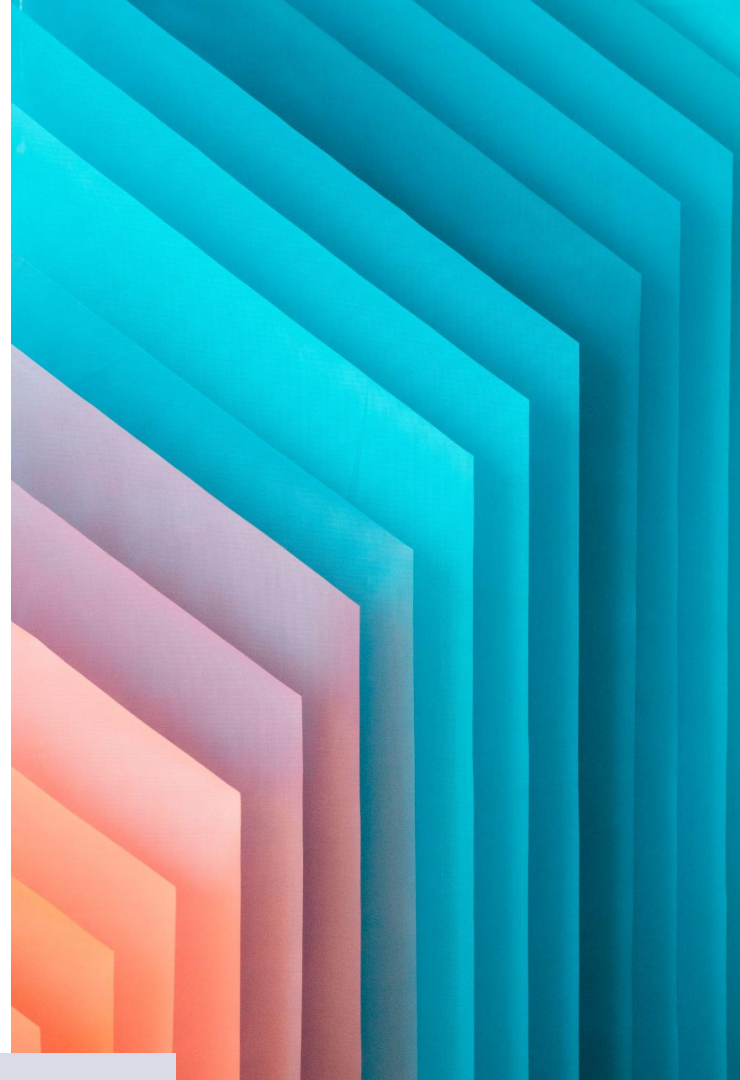
📅 28.2.2001



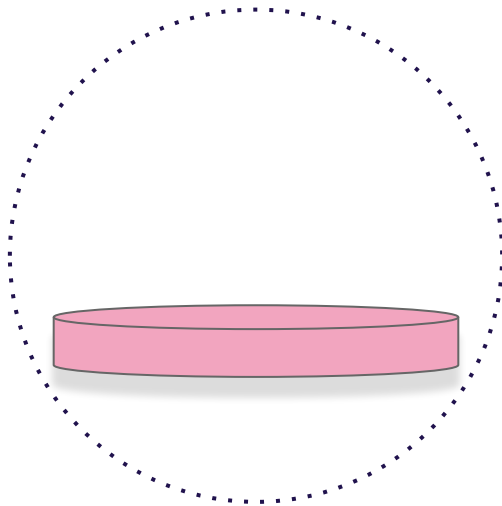
**Edition and  
curation in an  
intuitive way**

4/5

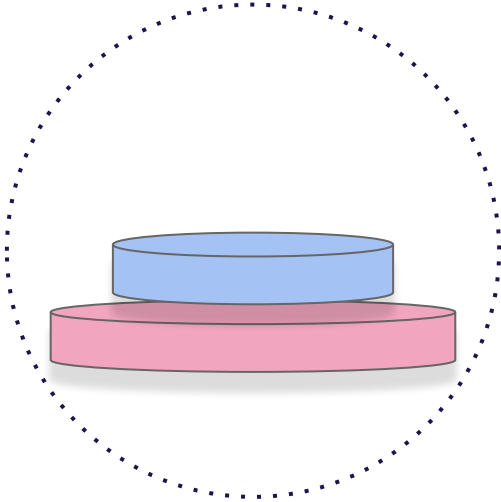
# How does Hanami work?



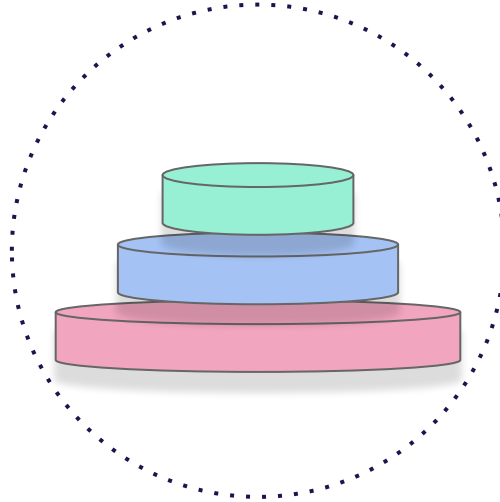
**Hanami can be  
plugged into any  
triple store**



**Improves search  
performance with  
Elasticsearch**

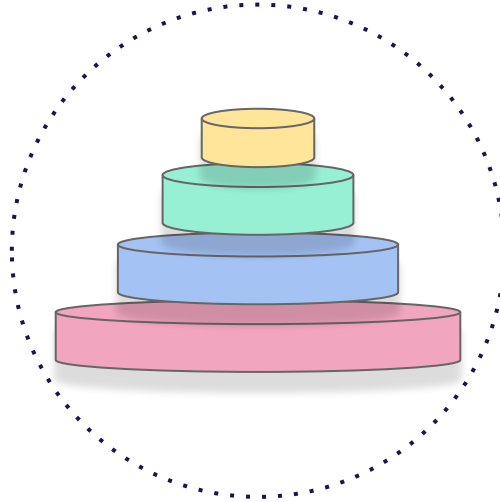


**Allows web-based  
access with  
Angular frontend**



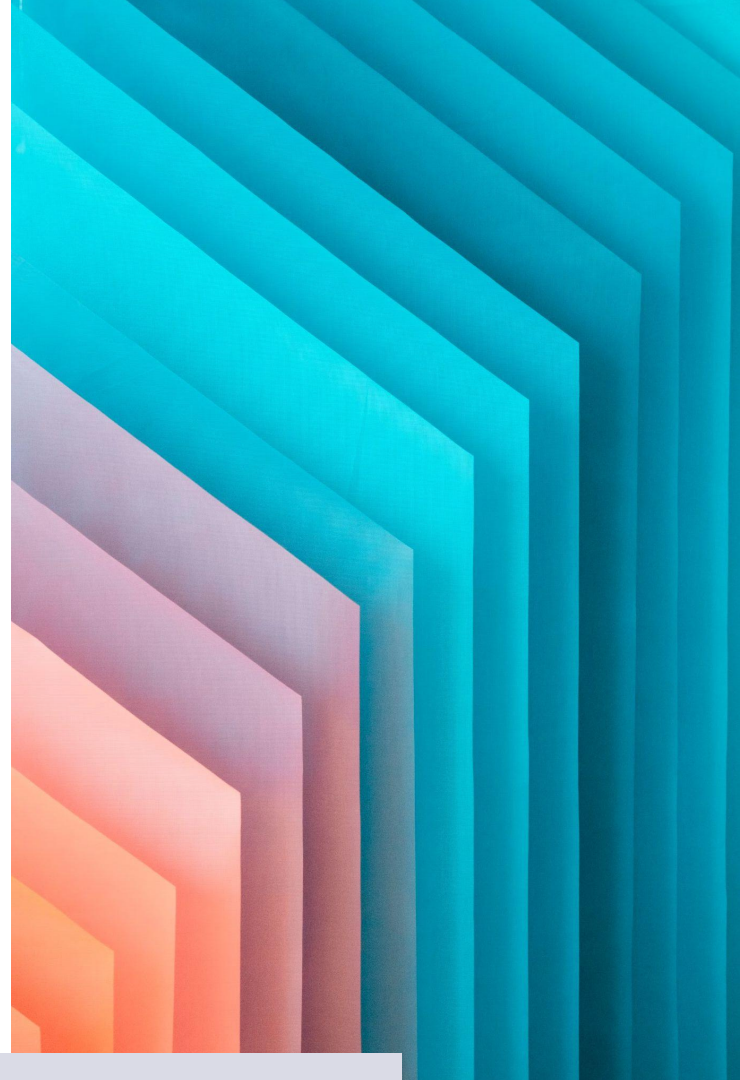


**Uses common  
standards (SHACL,  
JSON-LD, SPARQL...)**



5/5

**What's next for us?**



**1**

**Currently, we present the in-progress state of the application**, listen to feedbacks and insights from the semantic community

**2**

**Official V1 release planned for Q1 of 2023**  
Focus on PoC implementations



**3**

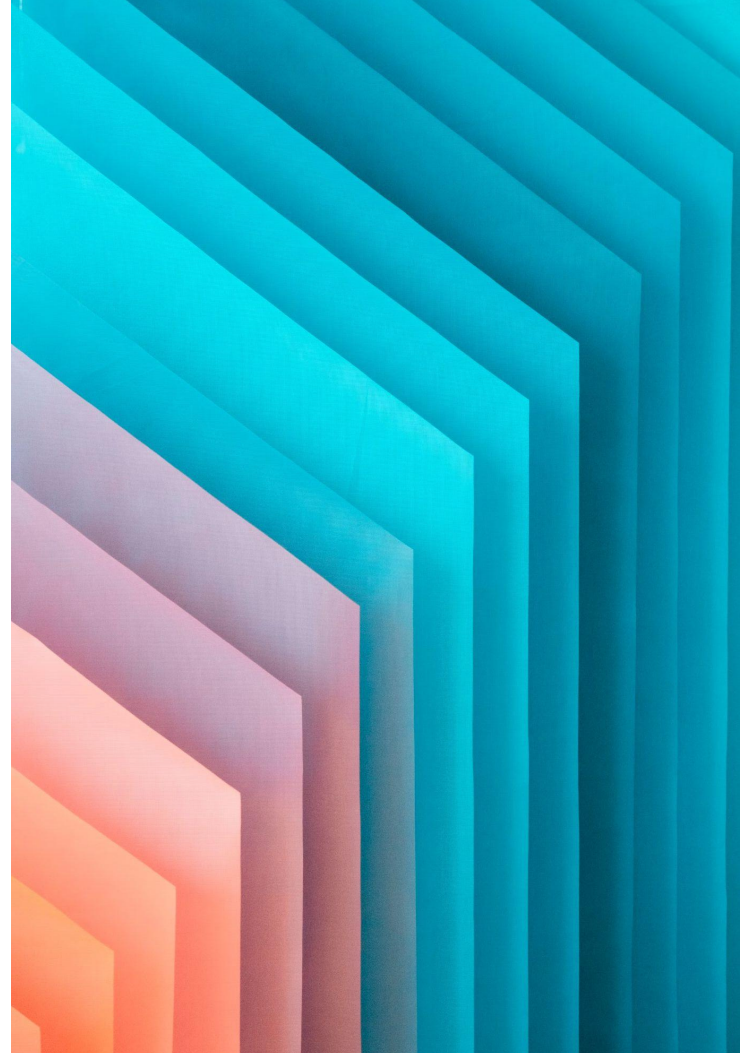
**Features:**

- **Data quality dashboard**
- **Publication automation**
- **Versioning**
- **Detailed user rights control**
- **Automatic detection of anomalies**

**Community Edition in Q3  
2023**

Thank you!

**We would be happy to hear  
your views about all that!**



**Do you want to discover the  
full potential of Hanami?**



Find out more on [hanami.app](https://hanami.app)  
or reach us at [workwith@hanami.app](mailto:workwith@hanami.app)